

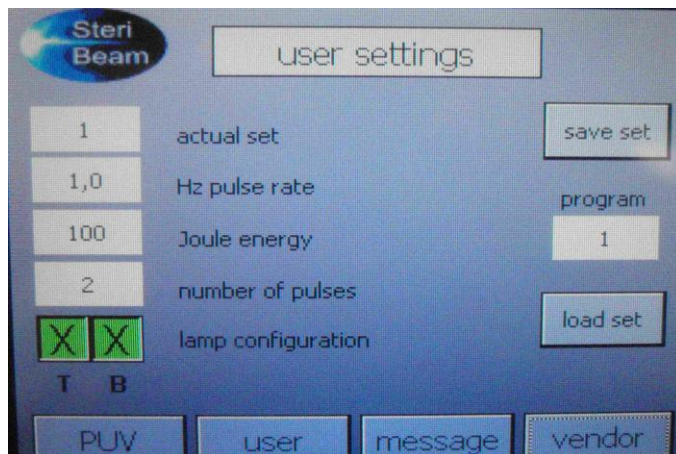
INTENSE PULSED LIGHT XeMaticA-FA-2xLamps Modules fully automatic R&D system

for piloting in food, pharmaceutical and cosmetic applications:



The lower housing has the power and control sections, the top module: the PUV chamber with two UV flash lamps, water cooling tanks and **5.7" Touch-Screen Selection is to select:**

- 180° or 360° product exposure by operating one or both lamps + side reflectors,
- pulse energies 100 J to 450 J,
- pulse repetition rates 1-5 Hz,
- number of pulses in a burst: 1-100,
- the product of selected pulse rep. rate and pulse energies are self-adjusted to below 2kw.



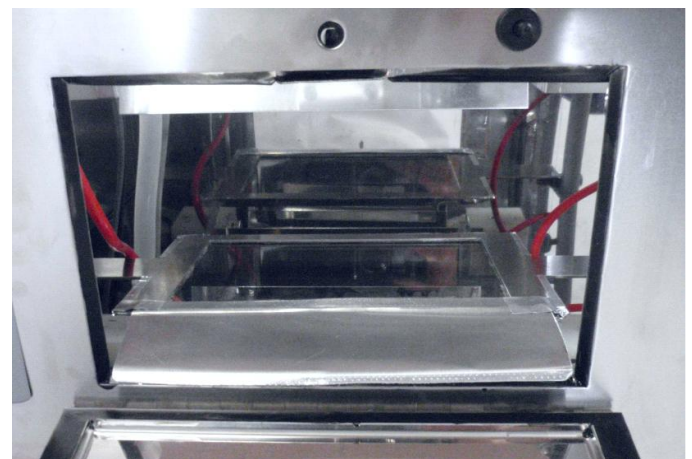
Safety: during the system operational cycle the chamber door is automatically locked: *no UV or EM fields, neither Ozone leaks out.*

Flash lamp type and spectra:

- 2xXe gas filled water-cooled flash lamps,
- 19 cm active length, up to 25J/cm along lamp,
- 200µs fixed pulse duration to almost double outputs in UVC, UVB and UVA spectra as to ones of common pulses of 400-800µs.
- UV fluxes to samples up to 1.0 J/cm²/pulse with reduced IR (heat) by lamps water jackets,
- **2-5 logs /pulse** for common bacteria,
- **1-2 logs /pulse** for common spores.

UV chamber:

- 18 cm wide x 24 cm high x 18 cm deep,
- two horizontal water-cooled PUV modules with 99% reflectors and a clear quartz shelf between,
- UV flux is largely uniform between lamps.
- UVC/UVB filter can be mounted over or under a sample shelf as below:



Pulsed UV electrical controls:

- Pulsed UV sensor,
- Pulsed current sensor,
- Pulsed voltage sensor,
- water control LED,
- two traces 100MHz scope,

Obtained sanitation results are directly applicable for the conveyer PUV systems.

System Size, Weight, Material:

60 cm wide x 40 cm high x 53 cm deep, polished stainless-steel, weight 42 kg.

Electrical: Power: 300-2000w.
115 or 220 V/AC, 1 phase 50/60 Hz,

This is our proven and sold SteriBeam Edition #2 Intense Pulsed Light system.